

License to Save: Globally Operating Industrial Company Optimizes its SAP License Usage



“In the past, the SAP license survey was associated with long performance times and a high manual effort. Today, the process is significantly faster due to automation, and at the same time the important factual basis for an optimized SAP license usage is created.”

Responsible head of IT



Abb. © maxoido - Fotolia.com

Industry

Industry

Solution

License management

Demands

- Cost savings through optimized license usage
- Time savings through centralized and automated data acquisition
- Enhanced basis for internal service accounting

Software

- cuDetect s@p

SAP licenses cause great costs for companies during acquisition and their successive maintenance. To optimize these costs and to adjust them to the exact demand is one of the main tasks of a license management. To do so, the license manager has to know the actual usage intensity of the SAP functionalities. It is important to know which SAP systems, clients and modules each user uses. This will prevent the company from paying too much for the SAP user licenses and their maintenance. On the other hand, an under-licensing isn't desirable either, which is often only detected at the annual SAP license survey.

A globally operating manufacturer of fire-resistant materials actively challenged the issue of suboptimal license usage and resulting licensing infringements. The large business decided to use a detection tool. Ever since, the solution **cuDetect s@p** automatically provides reliable data on user licenses as well as the usage intensity of the SAP systems. The company uses the optimization potential in relation with licensing and user maintenance in the best possible way, saves time during surveying and uses the acquired licenses in an SAP-conform way.

Central analysis of worldwide SAP user licenses

The large business uses the detection tool of Circle Unlimited company-wide at about hundred locations with several thousand employees. In total, seven SAP systems are analyzed, among them SAP ERP 6.0. The solution gathers the SAP user licenses from the systems and manages them centrally. After performing the analysis, the user classifications are directly adjustable centrally and are then adopted automatically by the connected systems. The company does not use a central user administration (CUA). The systems are addressed directly.

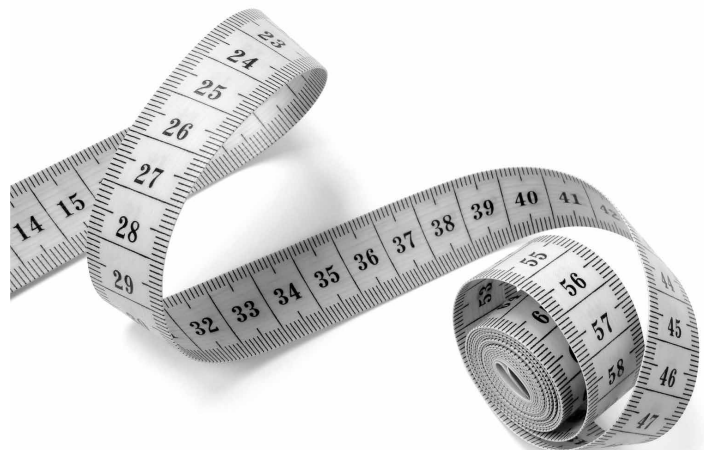


Abb. © pg_paf - Fotolia.com

“In the past, the SAP license survey was associated with long performance times and a high manual effort. Today, the process is significantly faster due to automation, and at the same time the important factual basis for an optimized SAP license usage was created.”, explains one of the responsible heads of IT and adds: **“We can now globally determine in a short amount of time which license types and how many users are required to use the SAP functionalities accordingly. The monthly usage analysis with optimization options can now be performed across our complete SAP landscape.”**

Sorting out problem cases

The detection tool determines users without a valid user type, identifies doublets of users with more than one user ID and detects inactive users. Additionally, the solution makes it possible to perform mass changes centrally on all connected systems – for example during movement of user locations or license type migrations. And even a compliance check in relation with the contractual provisions with SAP is possible to prevent under-licensing in advance.

“The solution helps us to detect costly errors and problems in the licensing quickly and efficiently and then solve them from a distance for our headquarters around the world“, explains the head of IT.

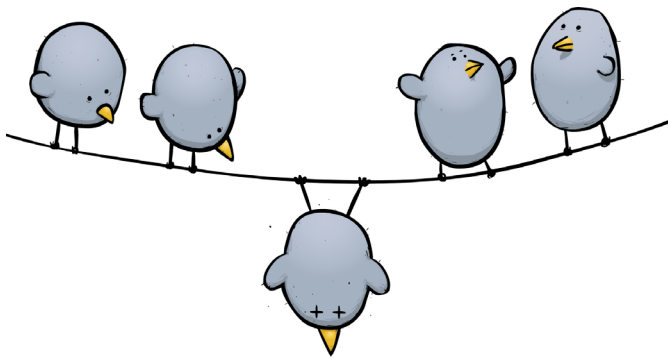


Abb. © Fotolia.com

Optimized user classification and internal service accounting

The SAP license model is complex. This is due to its range of different user classifications in connection with different measurement metrics, like the number of performed transactions or used CPU periods. In this way, errors are quickly made during the user configuration in the SAP system, which are difficult to detect and can be a source of unnecessary costs.

Thus, the company not only decided to use the detection tool but also the optional Business Transaction Agent of Circle Unlimited. For example, this may identify that the user has been listed as a ‘Professional User’ although it would be sufficient, according to the used transaction, to list this user as ‘Limited Professional User’. **“These facts contribute to**



Abb. © Fabrice MOSCA - Fotolia.com

the basis and serve as essential informant for internal service accounting“, explains the head of IT.

After half a year of decision-making, the department Information Management opted for Circle Unlimited due to performance, range of services and user friendliness. Another positive factor was the test installation that enabled the responsible persons to test the solution and its range of functions in advance.

“The solution’s introduction was quick and straightforward - it took only one and a half days. It was easy to integrate the detection tool into our existing SAP environment without any modifications. The solution convinced us during our everyday business with its reliability, and the team that supported us has been committed and helpful during the whole process“, says the head of IT about the cooperation. In the future, the company would like to proceed working on the optimization of the SAP license usage and increase the degree of automated processes even more.





Circle Unlimited AG is solution provider for SAP- and Microsoft-integrated document, contract and license management via SAP .Web, Mobile App

www.circle-unlimited.com
© Circle Unlimited AG